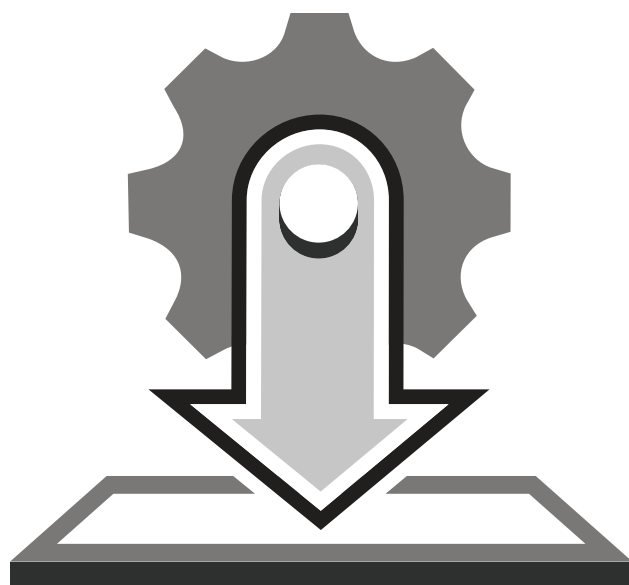


# STAGENOW 4.0 INSTALLATION GUIDE





# **STAGENOW 4.0 INSTALLATION GUIDE**

MN001501A15

Revision A

October 2019

No part of this publication may be reproduced or used in any form, or by any electrical or mechanical means, without permission in writing from Zebra. This includes electronic or mechanical means, such as photocopying, recording, or information storage and retrieval systems. The material in this manual is subject to change without notice.

The software is provided strictly on an “as is” basis. All software, including firmware, furnished to the user is on a licensed basis. Zebra grants to the user a non-transferable and non-exclusive license to use each software or firmware program delivered hereunder (licensed program). Except as noted below, such license may not be assigned, sublicensed, or otherwise transferred by the user without prior written consent of Zebra. No right to copy a licensed program in whole or in part is granted, except as permitted under copyright law. The user shall not modify, merge, or incorporate any form or portion of a licensed program with other program material, create a derivative work from a licensed program, or use a licensed program in a network without written permission from Zebra. The user agrees to maintain Zebra’s copyright notice on the licensed programs delivered hereunder, and to include the same on any authorized copies it makes, in whole or in part. The user agrees not to decompile, disassemble, decode, or reverse engineer any licensed program delivered to the user or any portion thereof.

Zebra reserves the right to make changes to any software or product to improve reliability, function, or design.

Zebra does not assume any product liability arising out of, or in connection with, the application or use of any product, circuit, or application described herein.

No license is granted, either expressly or by implication, estoppel, or otherwise under any Zebra Technologies Corp. intellectual property rights. An implied license only exists for equipment, circuits, and subsystems contained in Zebra products.

ZEBRA and the stylized Zebra head are trademarks of Zebra Technologies Corporation, registered in many jurisdictions worldwide. StageNow 4.0 Installation Guide All other trademarks are the property of their respective owners. ©2019 Zebra Technologies Corporation and/or its affiliates. All rights reserved.

**COPYRIGHTS & TRADEMARKS:** For complete copyright and trademark information, go to [www.zebra.com/copyright](http://www.zebra.com/copyright).

**WARRANTY:** For complete warranty information, go to [www.zebra.com/warranty](http://www.zebra.com/warranty).

**END USER LICENSE AGREEMENT:** For complete EULA information, go to [www.zebra.com/eula](http://www.zebra.com/eula).

Zebra Technologies Corporation  
Lincolnshire, IL U.S.A.  
<http://www.zebra.com>

## Revision History

Changes to the original guide are listed below:

Change	Date	Description
-01 Rev A	4/2015	Initial release
-02 Rev A	8/2015	Update with StageNow 2.1 information
-03 Rev A	12/2015	Update with StageNow 2.2 information
-04 Rev A	4/2016	Update with StageNow 2.3 information, add Android Lollipop support
-05 Rev A	8/2016	Update with StageNow 2.4 information
-06 Rev A	10/2016	Update with StageNow 2.5 information
-07 Rev A	1/2017	Update with StageNow 2.6 information
-08 Rev A	5/2017	Update with StageNow 2.7 information
-09 Rev A	11/2017	Update with StageNow 2.9 information Replace list of supported devices with link
-10 Rev A	2/2018	Update with StageNow 2.10 information Update list of supported OS's
-11 Rev A	5/2018	Update with StageNow 3.0 information Update list of supported OS's Add information regarding Chinese support
-12 Rev A	12/2018	Update with StageNow 3.2 information Update list of supported OS's
-13 Rev A	12/2018	No changes.
-14 Rev A	3/2019	Update with StageNow 3.3 information. Update list of supported OS's.
-15 Rev A	8/2019	Update with StageNow 3.4 information. Updates to list of supported OS's.
-16 Rev A	10/2019	Update with StageNow 4.0 information.



# TABLE OF CONTENTS

Revision History .....	iii
<b>About This Guide</b>	
Introduction .....	vii
Chapter Descriptions .....	vii
Notational Conventions .....	vii
Related Documents .....	viii
Service Information .....	viii
<b>Chapter 1: Getting Started</b>	
Introduction .....	1-1
StageNow Workstation Requirements .....	1-1
Device and MX Support .....	1-2
<b>Chapter 2: Software Installation</b>	
Introduction .....	2-1
Software Requirements .....	2-1
Installing the StageNow Workstation Tool .....	2-2
Upgrading the StageNow Workstation Tool .....	2-10
Upgrading to a Non-Released Version of the StageNow Workstation Tool .....	2-11
Uninstalling StageNow .....	2-11
Log Files .....	2-11
<b>Chapter 3: Client Configuration</b>	
Introduction .....	3-1
StageNow Client Installation .....	3-1
Log Files .....	3-2





# ABOUT THIS GUIDE

---

## Introduction

The *StageNow 4.0 Installation Guide* provides instructions for installing, uninstalling, and upgrading the StageNow Staging Solution, and includes information on versions, compatibility, and system requirements.

---

## Chapter Descriptions

Topics covered in this guide are as follows:

- [Chapter 1, Getting Started](#) describes the hardware and software requirements for setting up the StageNow Staging Solution.
- [Chapter 2, Software Installation](#) provides instructions for installing and uninstalling the StageNow Workstation Tool on a host computer/workstation, as well as information on prerequisite software.
- [Chapter 3, Client Configuration](#) describes the client device requirements for connecting StageNow to the device.

---

## Notational Conventions

The following conventions are used in this document:

- *Italics* are used to highlight the following:
  - Chapters and sections in this and related documents
  - Dialog box, window and screen names
  - Drop-down list and list box names
  - Check box and radio button names
- **Bold** text is used to highlight the following:
  - Key names on a keypad
  - Button names on a screen.

- bullets (•) indicate:
  - Action items
  - Lists of alternatives
  - Lists of required steps that are not necessarily sequential
- Sequential lists (e.g., those that describe step-by-step procedures) appear as numbered lists.

---

## Related Documents

- *StageNow User Help File*, p/n MN-002672-xx - provides information on using the StageNow Staging Solution software.

For the latest version of this guide and all guides, go to: <http://www.zebra.com/support>.

---

## Service Information

If you have a problem using the equipment, contact your facility's technical or systems support. If there is a problem with the equipment, they will contact the Customer Support Center at: <http://www.zebra.com/support>.

When contacting support, please have the following information available:

- Serial number of the unit
- Model number or product name
- Software type and version number

Zebra responds to calls by e-mail, telephone or fax within the time limits set forth in service agreements.

If your problem cannot be solved by support, you may need to return your equipment for servicing and will be given specific directions. Zebra is not responsible for any damages incurred during shipment if the approved shipping container is not used. Shipping the units improperly can possibly void the warranty.

If you purchased your business product from a Zebra business partner, please contact that business partner for support.

# CHAPTER 1 GETTING STARTED

---

## Introduction

This chapter includes the hardware and software requirements for setting up the StageNow Staging Solution.

---

## StageNow Workstation Requirements

Following are the minimum requirements for the host computer to run the StageNow Workstation Tool:

- Operating system: Microsoft Windows 7 or 10 (64 bit) - Professional English and Simplified Chinese
- Operating memory: 2 GB minimum
- Hard drive storage: 6 GB minimum (if .Net Framework is not already installed)
- Screen resolution: 1366 x 768 (16:9 ratio) recommended
- .Net Framework 4.5.  
.Net 4.5.1 is included in the StageNow installation wizard if required, and also available at <http://www.microsoft.com>
- StageNow Workstation Tool installer, available at <http://www.zebra.com/support>
- A PDF reader for supporting staging material, Adobe® Acrobat® Reader recommended.
- Java Runtime (JRE) to use Audio staging
- Wireless network interface card to use the Wi-Fi Hotspot feature



**NOTE** For the Chinese version, download the appropriate Adobe Acrobat Reader which supports the corresponding Asian language to generate staging bar codes from a Staging profile.

Only MX versions 8.0 and above support staging devices with the Chinese locale using the StageNow tool.

---

## Device and MX Support

StageNow 4.0 supports Android Version 8.1.0 Oreo and Android Version 9.0 Pie devices.

- Oreo devices are compatible with MX 8.0 and above versions
- Pie devices are compatible with MX 9.0 and above versions

✓ **NOTE** Oreo and Pie devices are backward compatible with most features from previous MX versions.

For a list of the Zebra Android devices and versions that StageNow supports, go to:

<http://techdocs.zebra.com/stagenow/>

Zebra Android Oreo and Pie devices that ship with the StageNow Client support all device configuration options that the StageNow Tool offers.

- StageNow 3.3 was the final version supporting Android 7.1 Nougat devices. Starting from version 3.4, only Android 8.1 Oreo and higher are supported. However, the StageNow Tool can configure older Android devices if a compatible MX version is chosen.
- Support for all Android Version 6.0.1 Marshmallow devices are terminated. StageNow 3.1 will be the final version supporting Android Version 6.0.1 devices. Future StageNow versions will support Android Version 7.1.2 Nougat or higher devices only.
- Support for Android Version 5.x Lollipop devices has been terminated. StageNow 3.0 was the final version to support Android Version 5.x Lollipop.
- Support for Android Version 4.4.x KitKat devices has been terminated. StageNow 2.8 was the final version supporting KitKat (Android 4.4.3 or higher) devices. Starting from StageNow 2.9, only the Lollipop or higher devices are supported.

# CHAPTER 2 SOFTWARE INSTALLATION

---

## Introduction

This chapter describes how to install the StageNow Staging Solution software.

---

## Software Requirements

The StageNow Workstation Tool requires and auto-installs Microsoft .NET Framework 4.5. The tool also includes the Staging Database and Staging Server.

## Installing the StageNow Workstation Tool

The StageNow setup package is bundled with the required software.

- ✓ **NOTE** Installing the StageNow Workstation Tool also installs the Staging Database and Staging Server. No separate installation is required for these components.

See *Upgrading the StageNow Workstation Tool* on page 2-10 if you have an older version of the StageNow Workstation Tool installed on the host PC.

To install the Workstation Tool:

1. Download the setup package **staging\_solution.[Version Number].exe**.
2. Double-click the setup package file.
3. If you do not already have .Net Framework 4.5, the installation process prompts you to install it.

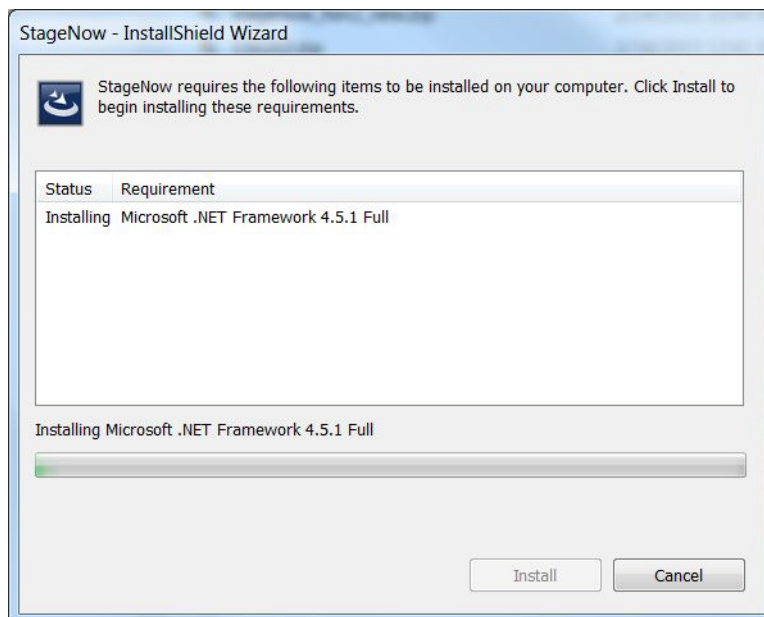


Figure 2-1 Installing .NET Framework

4. Select the appropriate language for installation.



Figure 2-2 Selecting a Language

5. Select **Install**. When Framework installation completes, a window appears stating that the wizard is preparing to install StageNow.

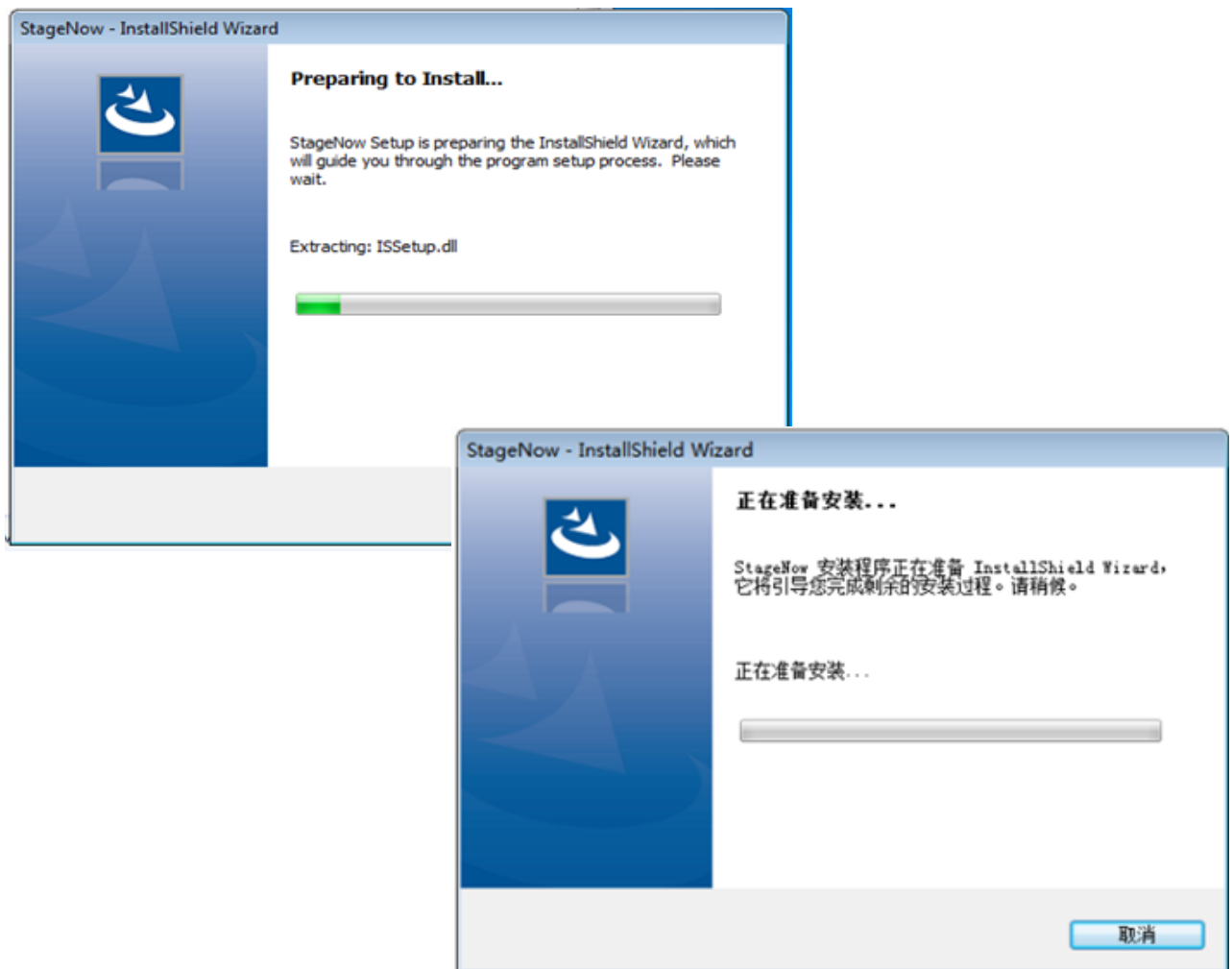


Figure 2-3 Initial Installation Window

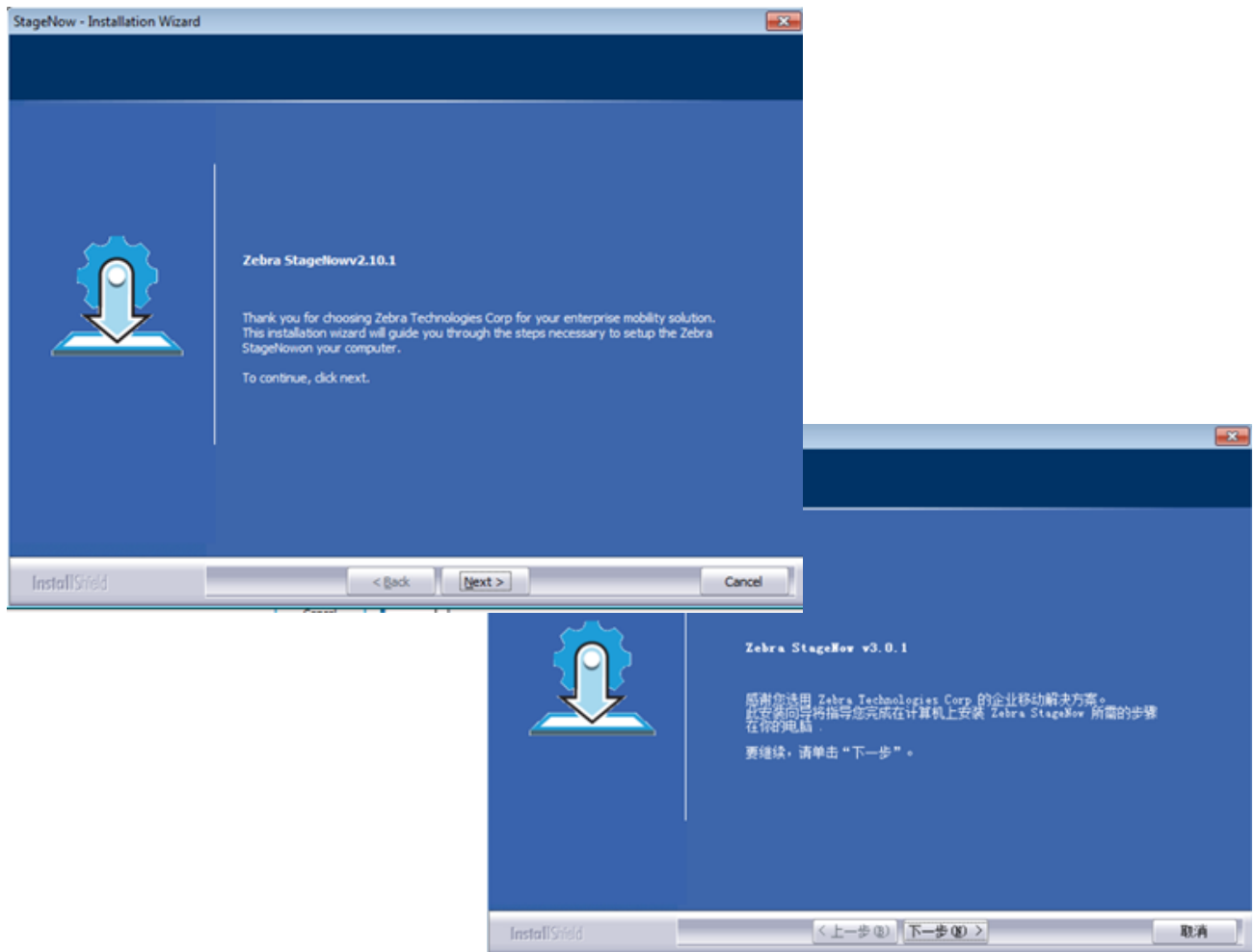


Figure 2-4 Installation Wizard

6. Select **Next** to continue, or **Cancel** to cancel the installation.

✓ **NOTE** If you select **Cancel**, select **Yes**, and then **Finish** to exit the installation process.





Figure 2-5 License Agreement Window

7. Select I accept the terms of the license agreement and select Next.

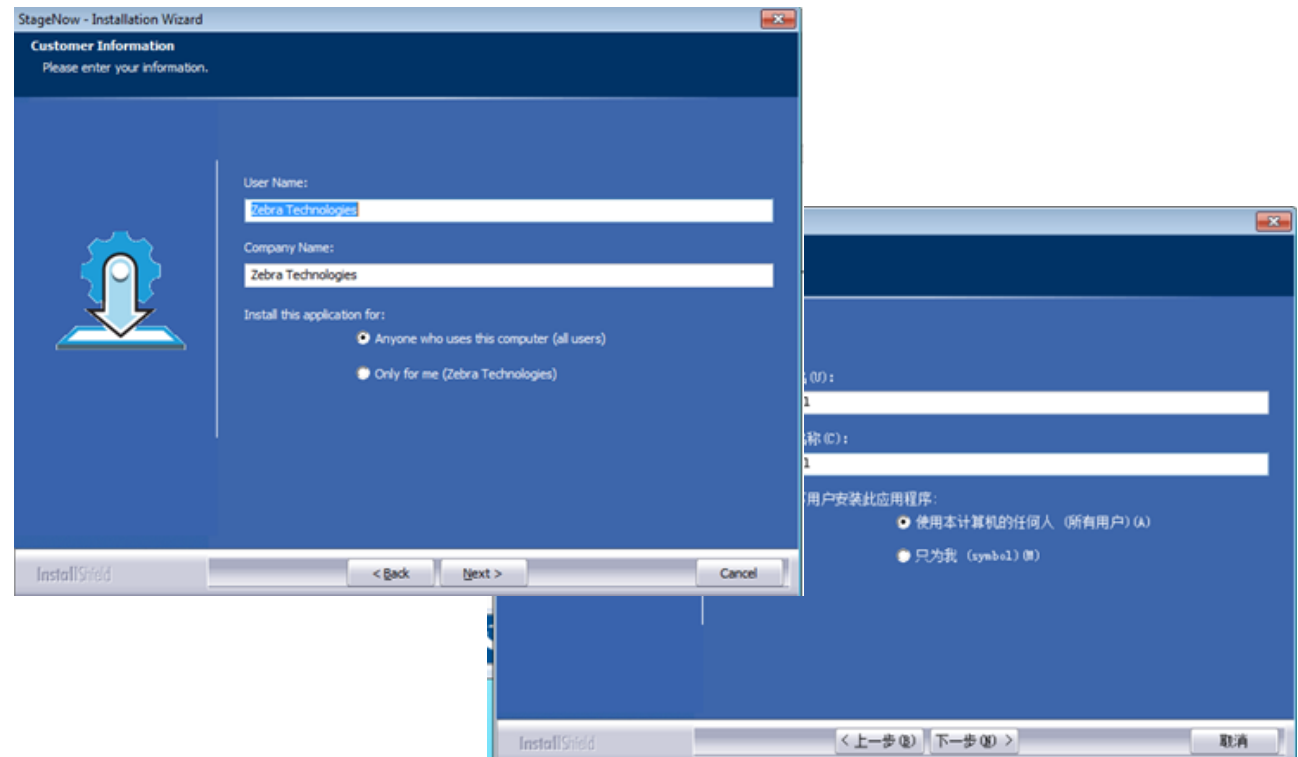
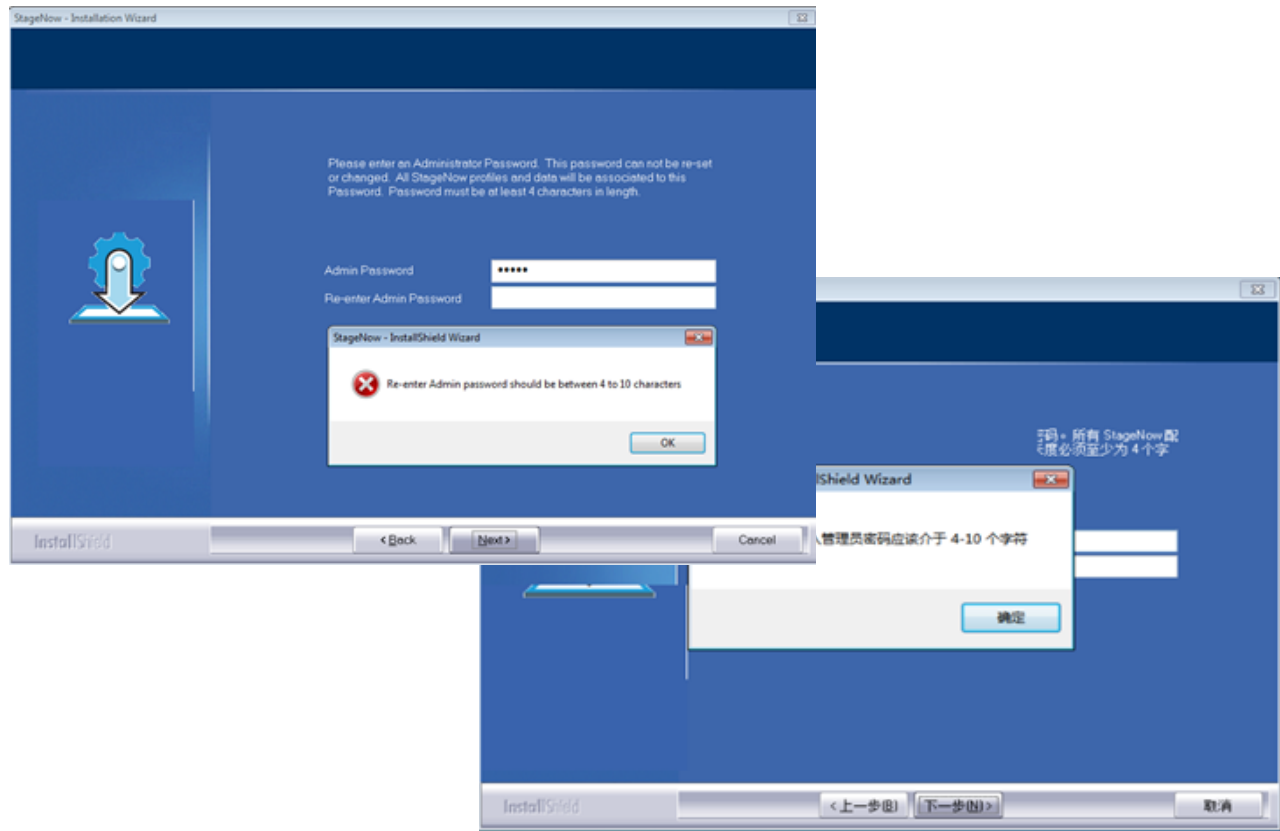


Figure 2-6 User Name Window

8. Enter a **User Name** and **Company Name**, and specify who can use the Workstation Tool.
9. Select **Next**.



**Figure 2-7** Administrator Password Window (Error)

10. Enter, and then re-enter, a password (between 4 and 10 characters) for the administrator and select **Next**.

✓ **NOTE** All StageNow profiles and data are associated with this password.

If the two passwords entered do not match or are not the correct length, an error window appears. Select **OK** and enter the passwords properly.

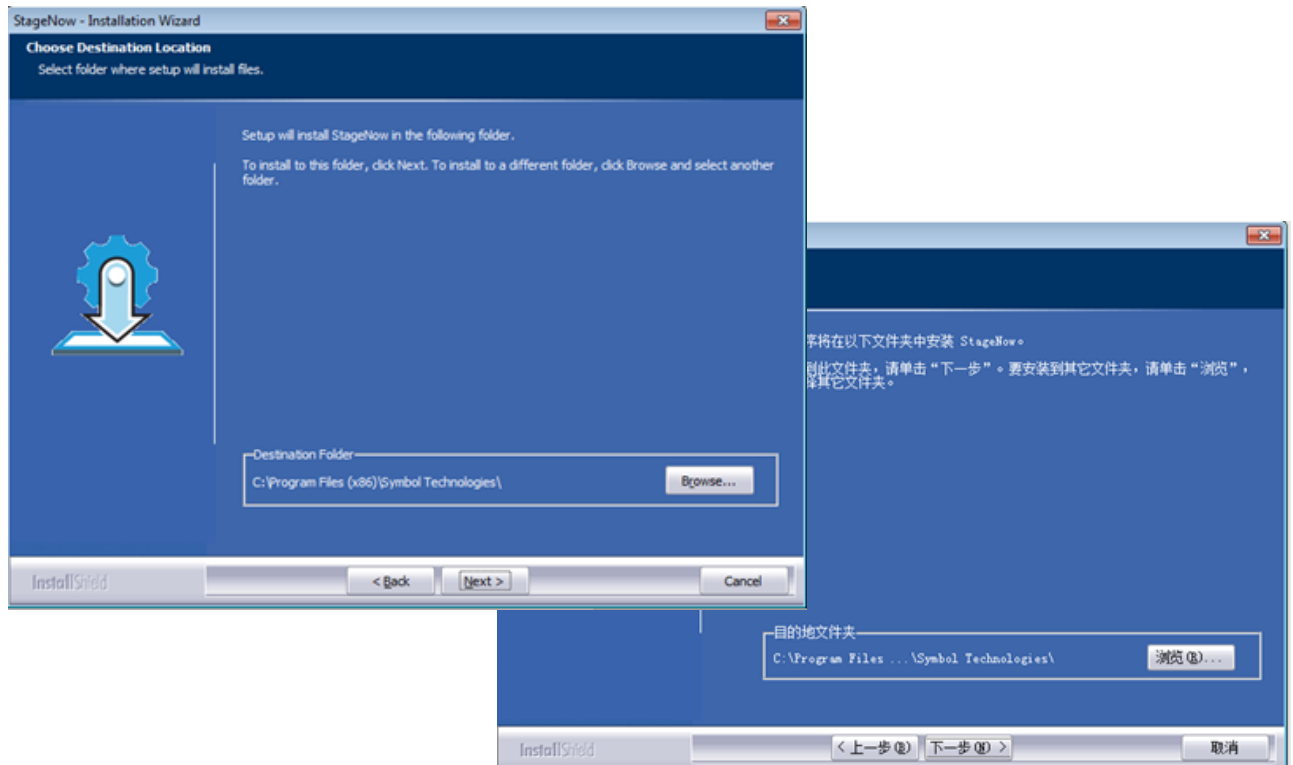


Figure 2-8 Destination Folder Window

11. Select **Next** to accept the default folder, or select **Browse** first to choose another installation folder.

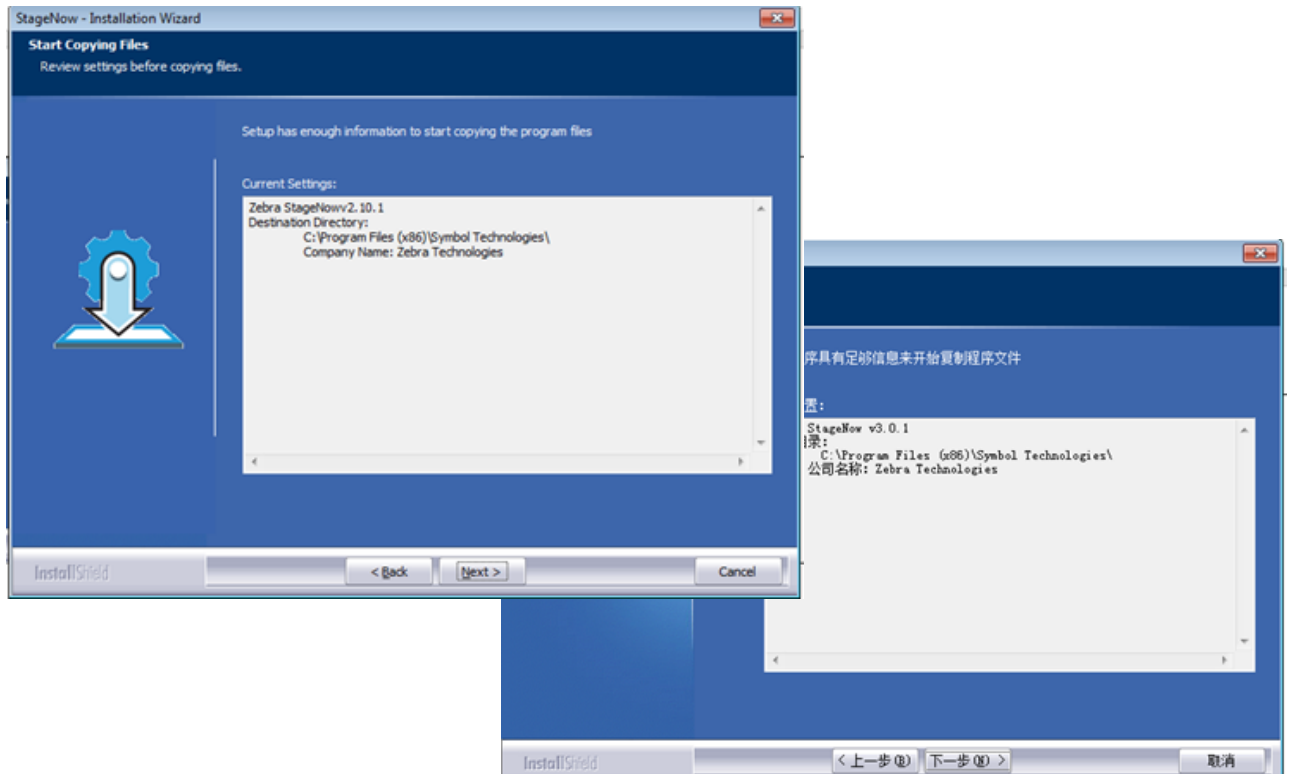


Figure 2-9 Review Settings Window

12. Select **Next** to accept the current settings, or select **Back** to make a change.

The wizard indicates that it is configuring the software for installation, then indicates that installation is almost complete.

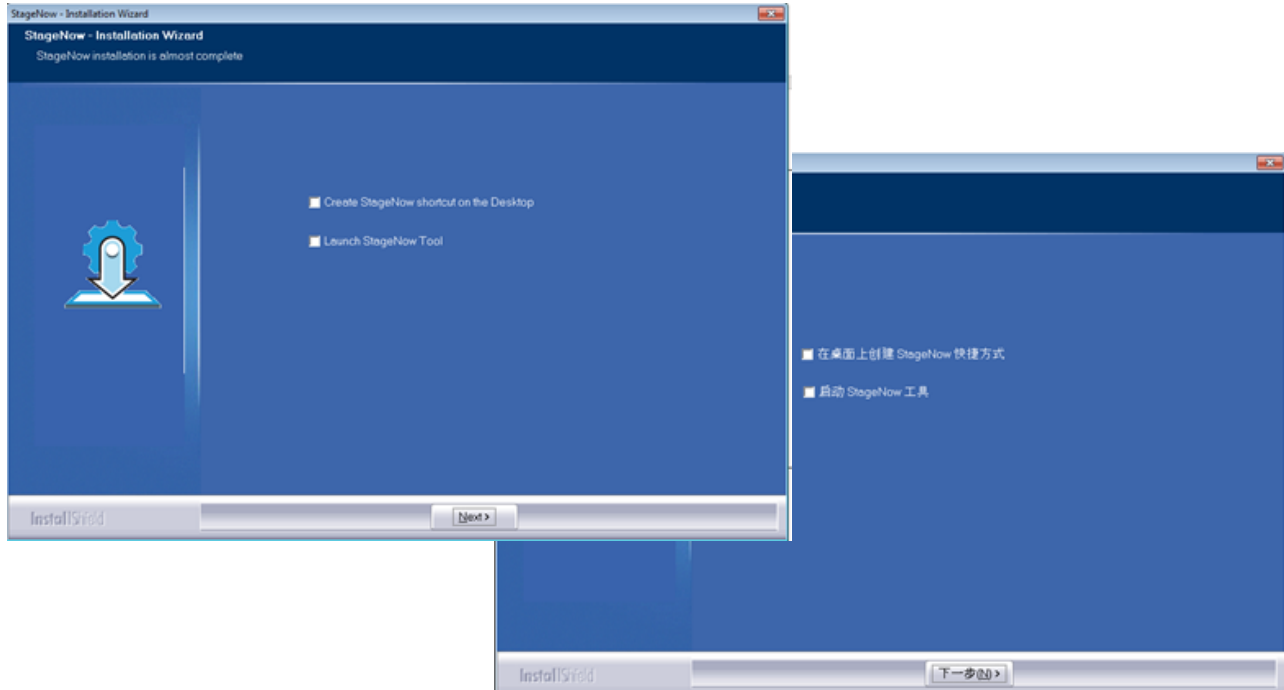


Figure 2-10 Installation Almost Complete Window

13. If desired, select checkboxes to create a shortcut on the desktop, and/or to launch the StageNow Workstation Tool, and select **Next**.

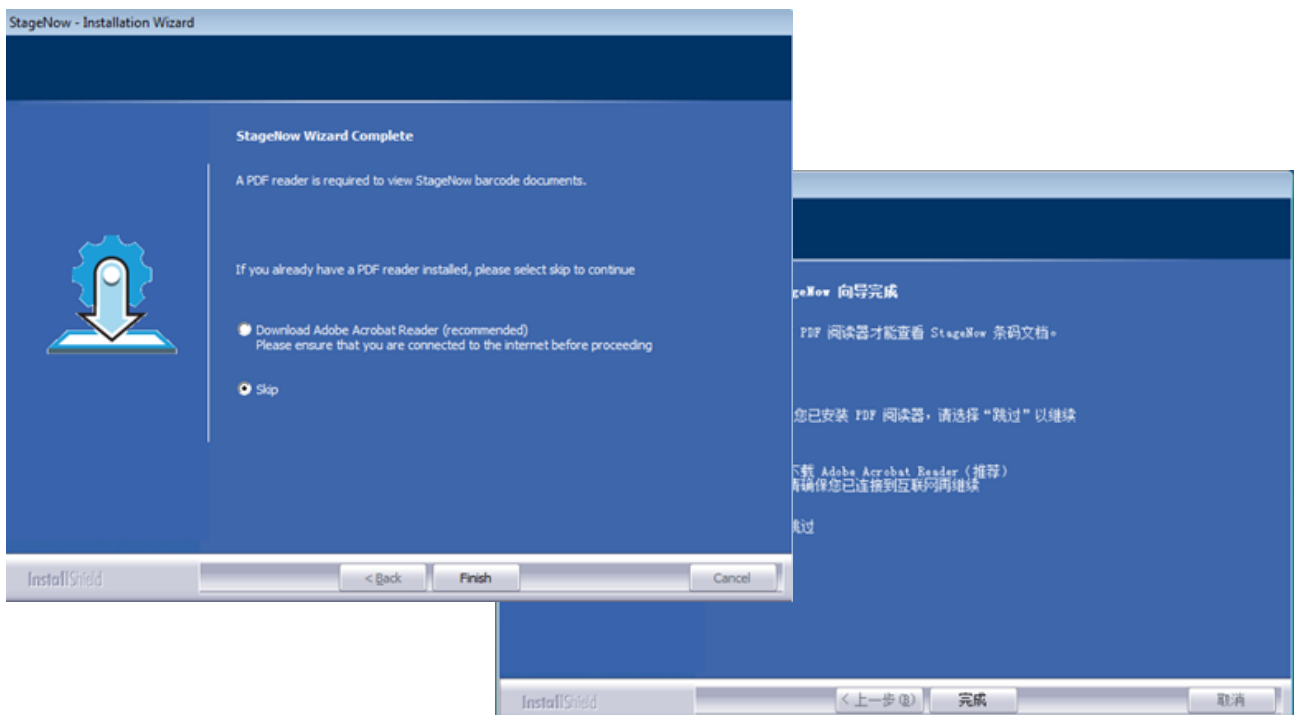


Figure 2-11 Download PDF Reader Window

14. Because staging material is presented in PDF files, the Wizard prompts you to download a PDF reader, or skip this if you already have a reader installed. Select the appropriate option and then select **Finish**.

✓ **NOTE** If you chose to download Adobe Acrobat Reader, the reader installation page opens for quick download and installation.

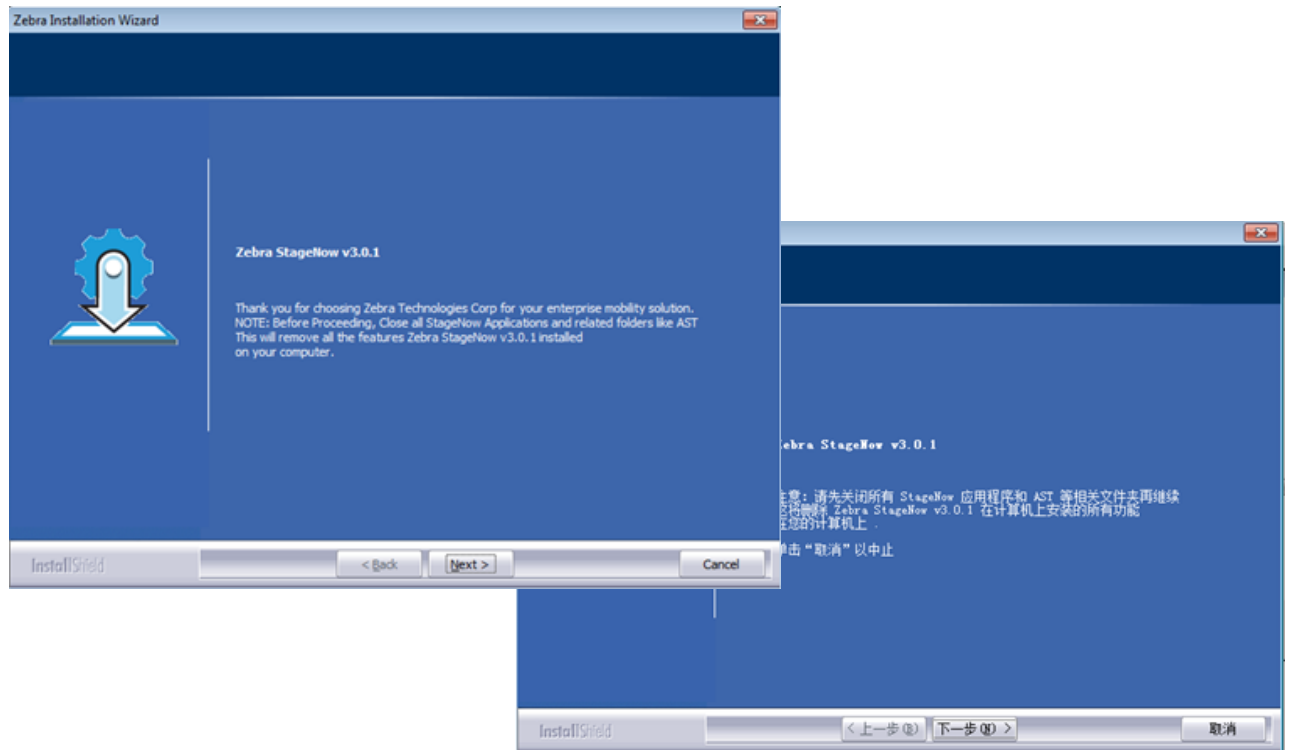


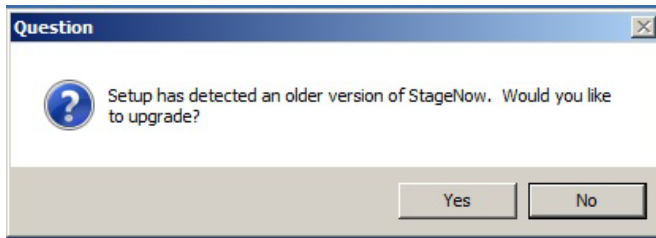
Figure 2-12 StageNow Installation Complete Window

## Upgrading the StageNow Workstation Tool

If you have an older version of the StageNow Workstation Tool installed on the host PC, upgrade it.

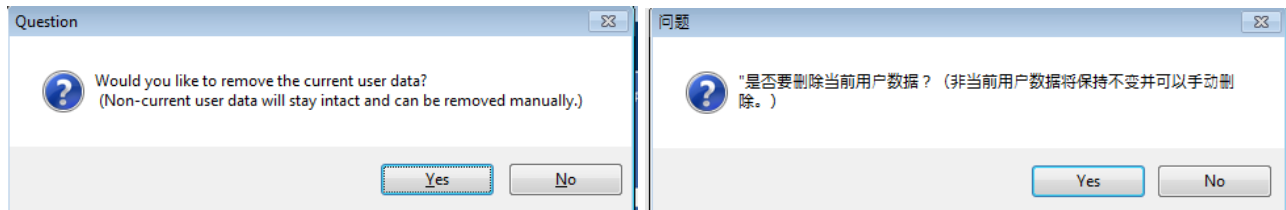
- ✓ **NOTE** Complete all incomplete profiles before upgrading the StageNow Workstation tool. Profiles that are incomplete after upgrading can exhibit unexpected behavior.

1. Download the setup package **staging\_solution.[Version Number].exe**.
2. Double-click the setup package file. InstallShield detects the existing version and displays the following message.



**Figure 2-13** Upgrade Message

3. Select **Yes** to proceed with the upgrade, or **No** to retain the existing version and cancel the upgrade. If you select **Yes**, the next message asks whether to remove existing StageNow user data (Settings, Profiles, etc.).



**Figure 2-14** Remove Data Message

4. Select the desired option to continue the upgrade.
  - ✓ **NOTE** If you choose to retain existing data, the install process does not request an administrator password as it retains the existing password.
5. See *Installing the StageNow Workstation Tool* on page 2-2 for the remainder of the installation instructions.

## Upgrading to a Non-Released Version of the StageNow Workstation Tool

If you are upgrading an older version of the StageNow Workstation Tool to a non-release version, InstallShield displays the following message:



**Figure 2-15** *Uninstall StageNow Message*

Manually uninstall the existing version using **Control Panel > Programs > Programs and Features > Uninstall**, then run the setup package file again.

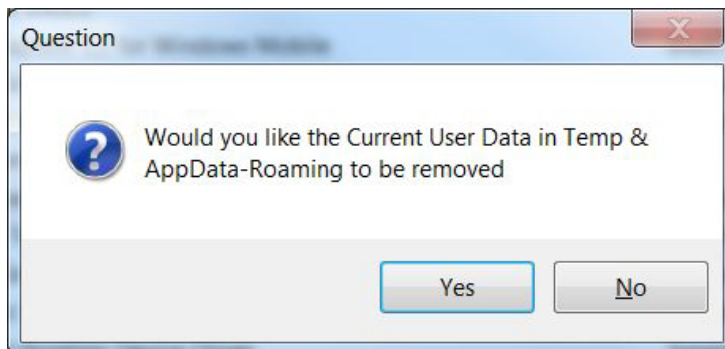
---

## Uninstalling StageNow

To uninstall the StageNow Workstation Tool:

1. Select **Control Panel > Programs > Programs and Features**.
2. Double-click **StageNow**. The Installation Wizard opens.
3. Follow the steps in the Wizard to complete the uninstallation.

✓ **NOTE** During uninstallation, the tool asks if you would like to remove your user and application (profile) data. Selecting **Yes** deletes all passwords, data, and profiles.



**Figure 2-16** *Remove Data Prompt*

4. Select **Finish** to complete the uninstallation.

---

## Log Files

StageNow Workstation Tool files are generated in the `%userprofile%\AppData\Roaming\StageNow\AST\logs` folder. Use these files for debugging and troubleshooting.





# CHAPTER 3 CLIENT CONFIGURATION

---

## Introduction

This chapter describes the client device requirements for connecting StageNow to the device, and lists the Android devices supported.

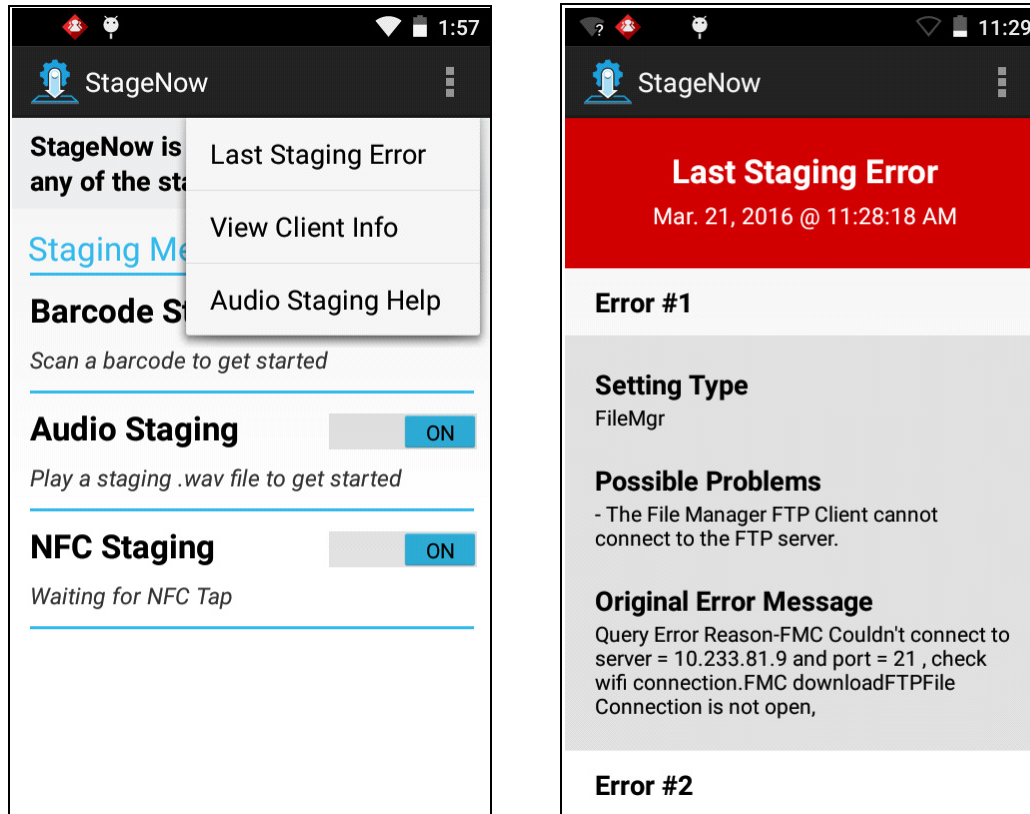
---

## StageNow Client Installation

StageNow supports all Android Oreo, Nougat and Marshmallow devices from Zebra. Oreo, Nougat and Marshmallow devices that ship with the StageNow Client installed support all device configuration options that the StageNow Tool offers.

## Log Files

Use device log files for debugging and troubleshooting. To review the log to determine the cause of an error, select **Yes** from the staging failure screen, or from the StageNow Client menu, select **Last Staging Error**.



**Figure 3-1** Viewing Logs

You can also view logs via the ADB Logcat.



**Zebra Technologies Corporation**  
Lincolnshire, IL U.S.A.  
<http://www.zebra.com>

**ZEBRA and the stylized Zebra head are trademarks of Zebra Technologies Corporation, registered in many jurisdictions worldwide. All other trademarks are the property of their respective owners.  
©2019 Zebra Technologies Corporation and/or its affiliates. All rights reserved.**

